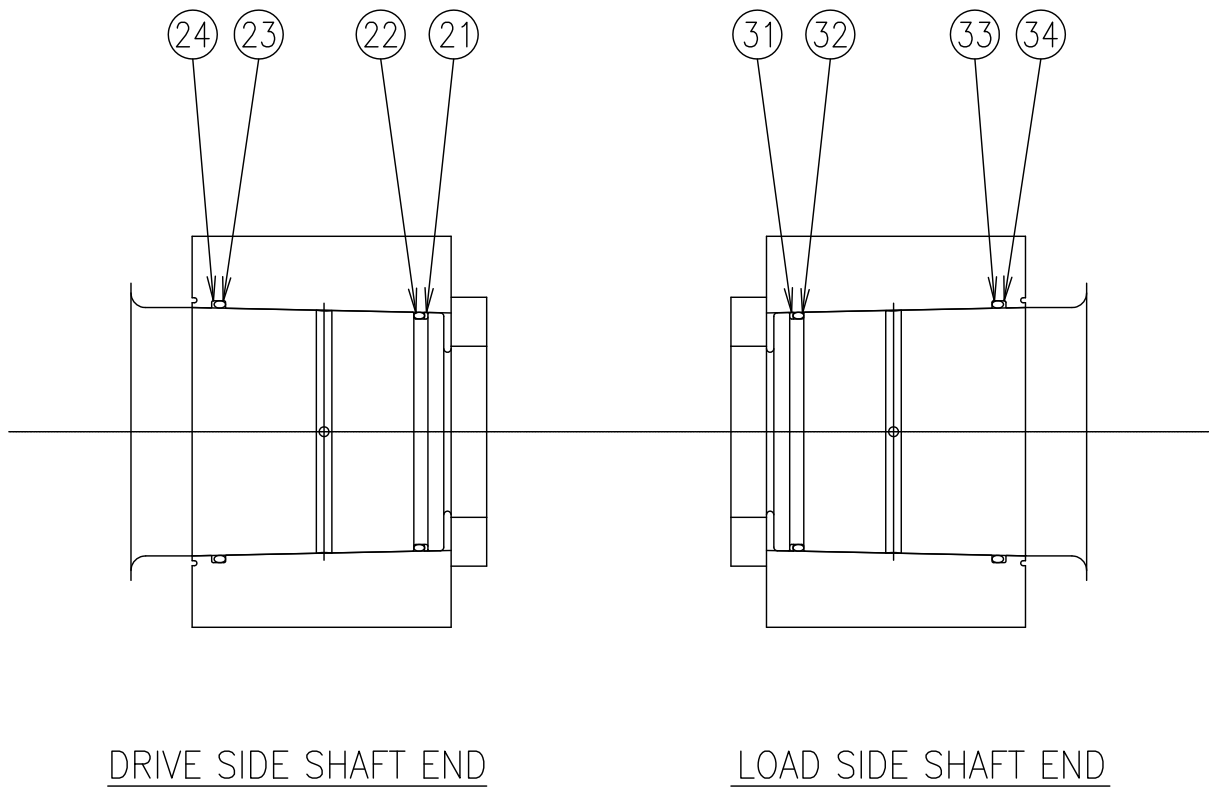
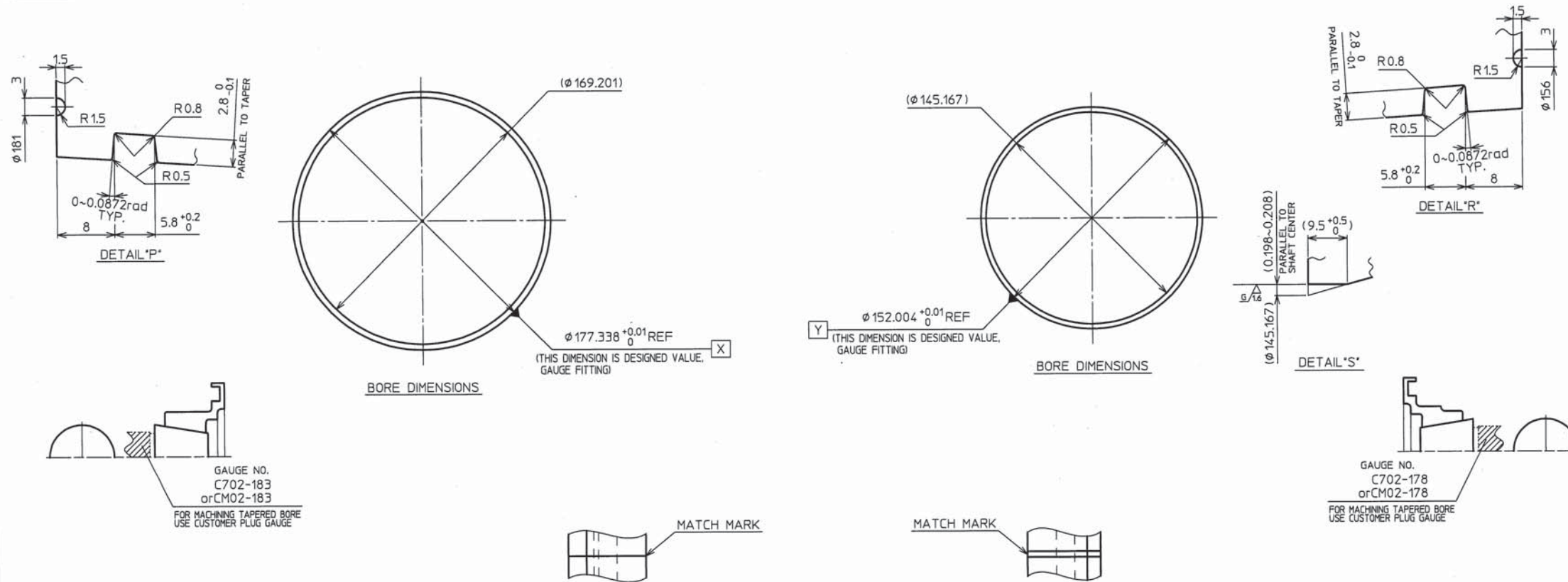


REVISION RECORD SHEET

Rev.	Date	Prepared	Checked	Approved	PM	Sheet	Revision Record
0	Jun. 19, 2012	-	-	-	-		Original Issue.
A	Sep. 21, 2012	H. H	A. H ^{FOR}	A. H ^{FOR}	H. F	P1	Revised per customer' s comment.
B	Nov. 06, 2012	H. H	S. I	K. S	H. F	P2	Revised per customer' s comment.
C	Jan. 17, 2014	H. H	S. I	K. S	-	Cover	Issued as final.

ITEM	PARTS LIST	QUANTITY [PCS]		PARTS NUMBER
		WORKING		
NEXT PAGE	COUPLING ASS'Y	1		5711-11
21	BACK UP RING	1		5711-21
22	"O"-RING	1		5711-22
23	"O"-RING	1		5711-23
24	BACK UP RING	1		5711-24
31	BACK UP RING	1		5711-31
32	"O"-RING	1		5711-32
33	"O"-RING	1		5711-33
34	BACK UP RING	1		5711-34
41	MOMENT SIMULATOR	1		5711-41





1. SPECIFICATION

APPL. REQ.	25714	COUPLING CAPABILITY (kw/100rpm)	976
POWER (kw)	DRIVEN RATED LOAD 29628		
SPEED (RPM)	NORMAL / RATED 4719 / 4901		
	MIN. CONT. 3431		
	MAX. CONT. 5146		
	TRIP 5661		
TORQUE (N-m)	NORMAL 52034 (5306kg-m)	RATED	93200 (9500kg-m)
	DRIVEN RATED LOAD 57728 (5887kg-m)		
	CYCLIC ---		
	NO. CYCLES ---		
	MAX. TRANS. ---	PEAK	123000 (12600kg-m)

APPLICATION (SERVICE) FACTOR: 1.75 ACTUAL 1.79

MISALIGNMENT: NORM. TRANS.

PARALLEL OFFSET (mm): --- --- 6.78 6.78

WITH 1166.5 mm DIAPHRAGM CNTR. DIST

RESULTANT ANGLE (RAD): --- --- 5.81x10⁻³(1/3deg) 5.81x10⁻³(1/3deg)

NON-PARALLEL ANGLE (RAD): --- --- --- ---

TOT. ANGLE (RAD): --- --- 5.81x10⁻³(1/3deg) 5.81x10⁻³(1/3deg)

AXIAL (mm) +/- +3.74 +5.20/+1.54 ±5.30 ±5.30

BENDING MOMENT AT 5.81x10³(1/3deg) RAD 303(30.8kg-m) N-m

AXIAL FORCE AT ±5.30 mm 19400(1980kg) N

TORSIONAL STIFFNESS: 1.58x10⁶(2810kg-m/deg) N-m/RAD (BASED UPON SHAFT ONLY FOR 1/3 LENGTH OF HUB AND SHAFT & HUB FOR REMAINING 2/3 LENGTH.)

AXIAL NATURAL FREQUENCY: AT ZERO mm AXIAL DEF. 62.7(3760cpm) Hz AT ±5.30 mm AXIAL DEF. 140(8400cpm) Hz

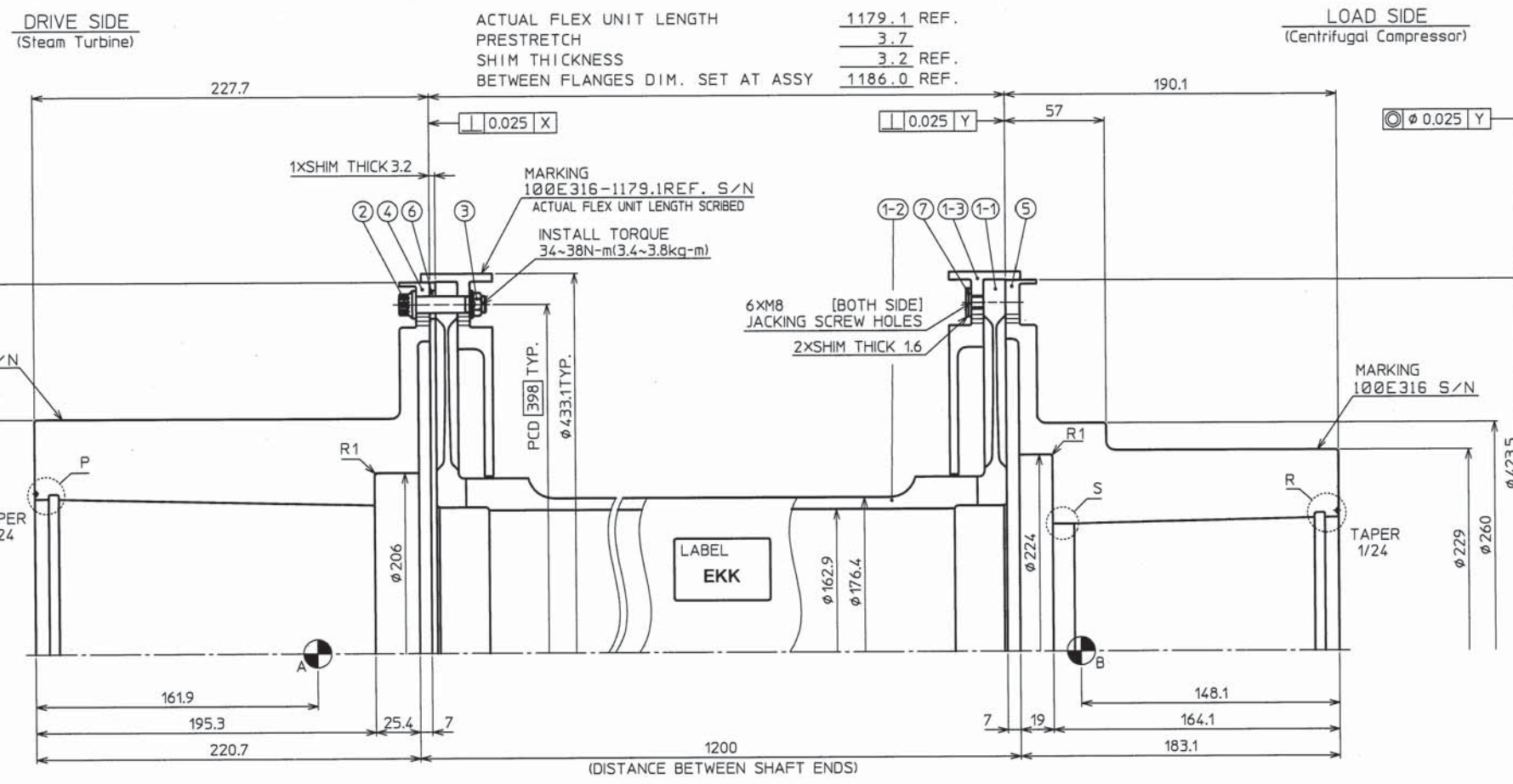
LATERAL NATURAL FREQUENCY: 356(21350cpm) Hz BASED UPON RIGID SUPPORTS

MASS (IGD²): FLANGE (DRIVE) 61.9 kg, 9260 (37000) kg-cm² FLANGE (LOAD) 42.9 kg, 5830 (23300) kg-cm² FLEX UNIT 66.6 kg, 12200 (48800) kg-cm² TOTAL 171.4 kg, 27290 (109100) kg-cm²

AT C.G. A 934(95.2kg) N, B 748(76.2kg) N

DYNAMIC BALANCE TOLERANCE (U-g-mm) IN EACH OF TWO PLANES: EACH COMPONENT: U=6350W/N, 1.27W, 7.2W ASSEMBLY CHECK BALANCE: U=63500W/N, 12.7W, 72W W=MASS (kg) PER PLANE N=MAX. CONT. SPEED (RPM) (W:WHICHEVER IS THE GREATEST)

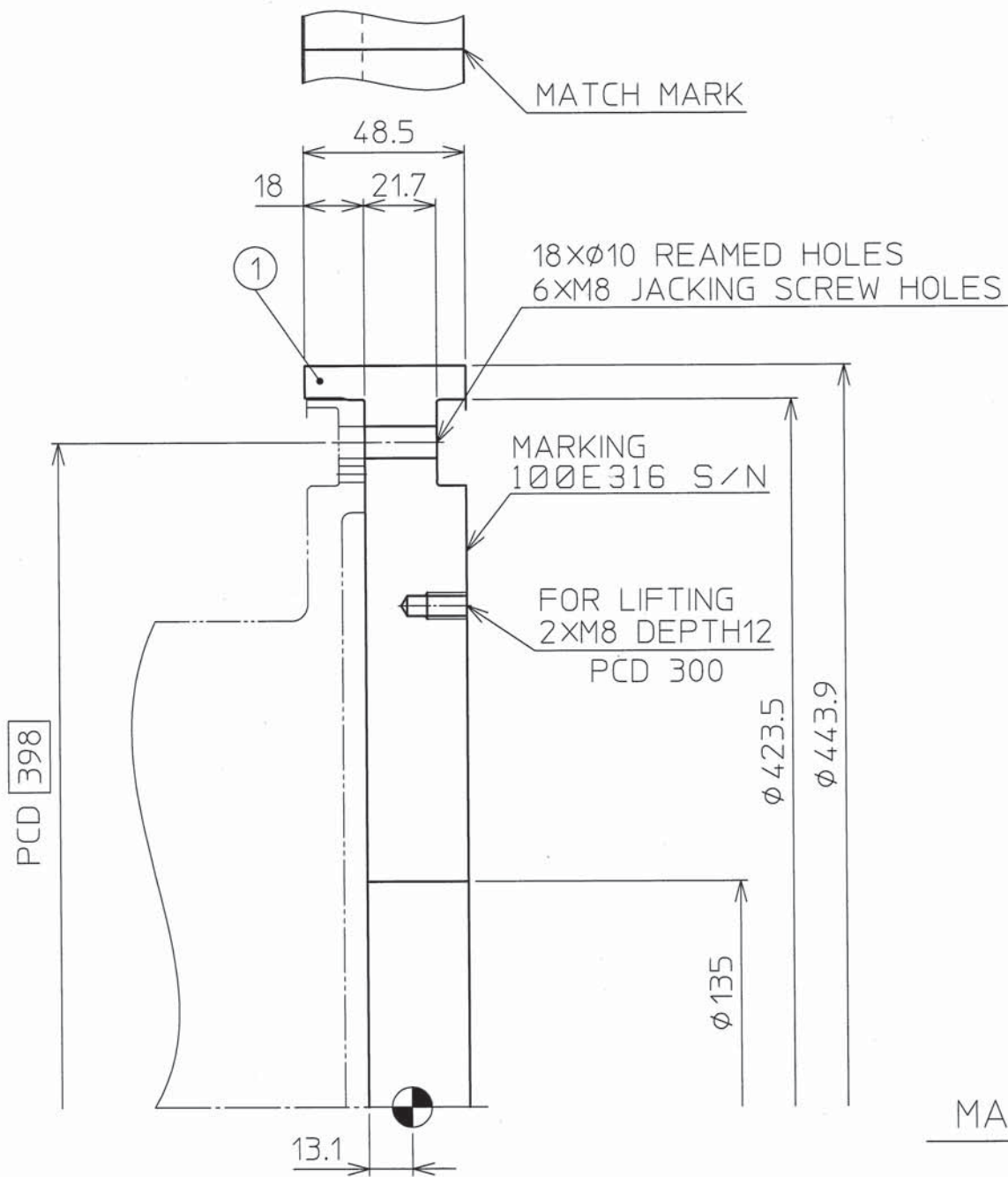
2. COATING
 FLEX UNIT: COATED WITH SERMETEL 'W' (DIAPH. PROFILE SURFACE ONLY), EPOXY PRIMER & POLY-URETHANE BLUE.
 FLANGE: BLACK OXIDE.



USER	TEC
PROJECT	TEC/KALTIM-5(2500 dAmm a)
ORDER NO. / ITEM NO.	3Y3N68/MCW111, MCS111, MCE111
REQ. NO.	796-2D308
CUSTOMER	MITSUBISHI HEAVY INDUSTRIES COMPRESSOR CORPORATION

NO.	PART NAME	QTY	MATERIAL	EQUIV. ASTM	NO.	PART NAME	QTY	MATERIAL	EQUIV. ASTM
7	SHIM	2	SCM440/SCM440H	A711-4140					
6	SHIM	1	SCM440/SCM440H	A711-4140					
5	FLANGE	1	SNCM439	A711-4340					
4	FLANGE	1	SNCM439	A711-4340					
3	SELF LOCK NUT	72	A286	A286					
2	REAMER BOLT (RB-55)	72	AISI8740 (MIL-S-6049A)	A322-8740	SP3	SELF LOCK NUT	8	A286	A286
1-3	GUARD	2	SCM440/SCM440H	A711-4140					
1-2	CENTER TUBE	1	SNCM439	A711-4340					
1-1	DIAPHRAGM	2	NK36	A 564	SP2	REAMER BOLT (RB-55)	8	AISI8740 (MIL-S-6049A)	A322-8740
1-0	FLEX UNIT	1	ETC						

SCALE	NONE	DATE	May.10.12	BY	M. Sato	APP.	H. Utagawa
ITEM CODE	E100E3161179.1ZZW	TYPE	100E316-1179.1-ZZ	REV.	DATE	BY	APP.
ORIGINAL PRODUCT CODE	DIAPHRAGM COUPLING	CODE (DRAWING No.)	EA-01908920000100	CUSTOMER CODE	103265	USER CODE	EAGLE INDUSTRY CO., LTD.



MASS: 33.3kg

NOTE

- ADAPTED TO DRIVE SIDE'S FLANGE OF DIAPHRAGM COUPLING. THE COUPLING DWG NO. IS AS FOLLOWS. DWG NO:EA-0190892
- DYNAMIC BALANCE TOLERANCE (U=g-mm) IN A PLANE: COMPONENT BALANCE
 U=6350W/N, 1.27W or 7.2 *
 W=MASS (kg)
 N=MAX. CONT. RPM
 (*WHICHEVER IS THE GREATEST)

USER	TEC
PROJECT	TEC/KALTIM-5(2500 dAmm a)
ORDER NO. / ITEM NO.	3Y3N68 / MCW111
REQ. NO.	796-2D308
CUSTOMER MITSUBISHI HEAVY INDUSTRIES COMPRESSOR CORPORATION	

SCALE	NONE	DRAWN	APP. <i>M. Saito</i>
DATE	May.10.'12	CHKD. <i>M. Sato</i>	CHKD. <i>H. Magara</i>
ITEM CODE E100E3160190892			
TYPE 100E3161DADAPTER			
REV.	DATE (CHANGE NO.)	BY	APP. NAME
REVISIONS			MOMENTSIMULATOR
ORIGINAL PRODUCT CODE			CODE(DRAWING No.)
			EA-01909060000100
CUSTOMER CODE		103265	EAGLE INDUSTRY CO.,LTD.
USER CODE			

NO.	PART NAME	QTY	MATERIAL	EQUIV. ASTM
1	MOMENT SIMULATOR	1	S45C	A576-1045